



About Transnational Giving Europe

Cross-border philanthropy in Europe is now a reality. MIT supporters in a number of European countries may make tax-efficient contributions to the *MIT Foundation (UK)*, a UK charity, through the Transnational Giving Europe (TGE) network.

TGE is a partnership of European foundations that enables donors resident in one of the participating countries (both corporations and individuals) to provide financial support to nonprofit organizations in other member countries.

To be eligible to receive a tax benefit in your country of residence, you must:

- Be resident in any of the participating countries
- Donate to a TGE-approved charitable organization in any of the other countries in the network

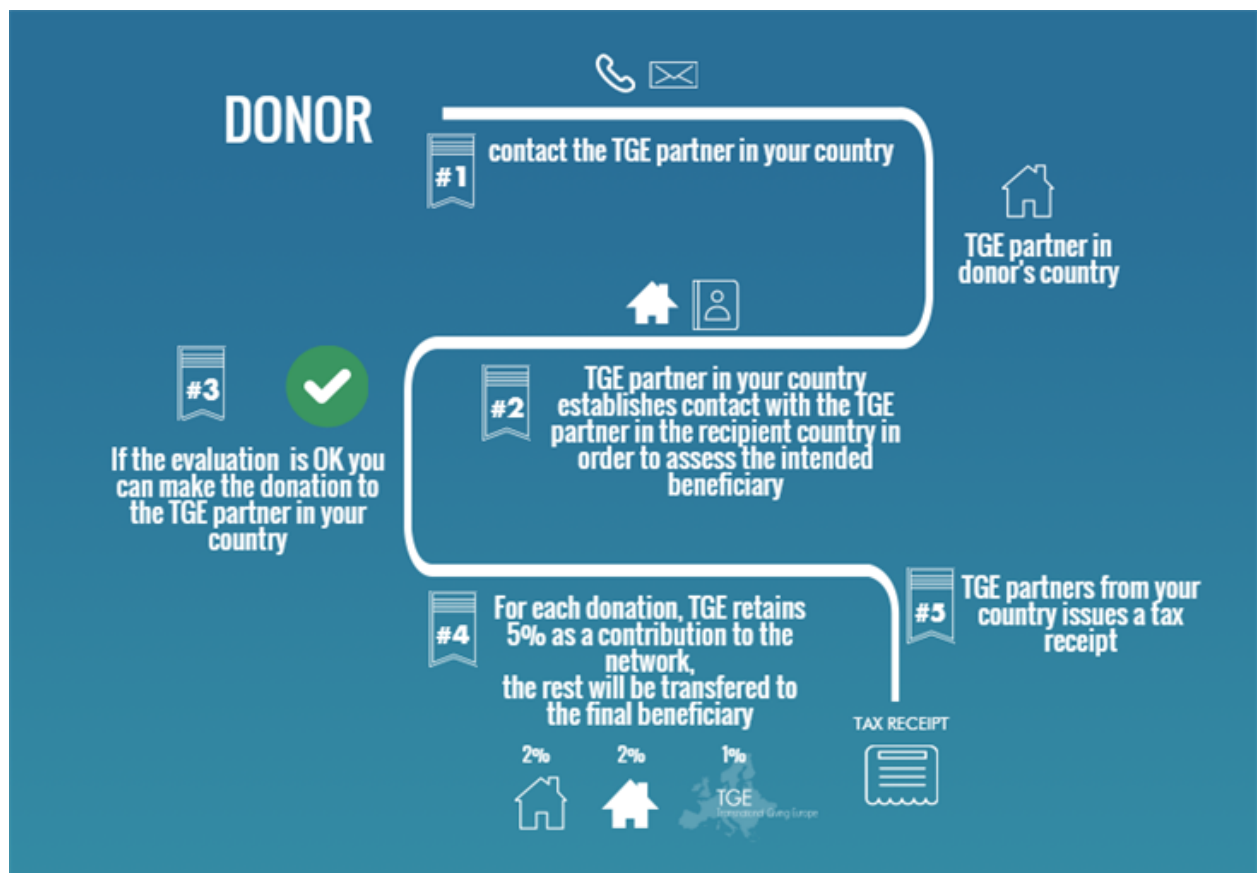
For more information, including any recent developments from TGE, please visit the network's website: www.transnationalgiving.eu.

How it Works

You make your gift to the TGE foundation partner in your country of residence. The foundation then provides you with all the fiscal advantages, including a tax receipt. According to the foundation's distribution schedule, your gift is then transferred to your intended foreign beneficiary — in this case, the *MIT Foundation (UK)*.

Fees

TGE charges operational fees that will be deducted from the gift: 5% up to €100,000, 1% for gifts €100,000 and above, and a maximum fee cap of €15,000. Remitting banks also charge transaction fees that vary from bank to bank.



Example

Donor lives and pays taxes in Germany and wants to make a gift to MIT, but is interested in the availability of any gift tax deduction for the gift.

1. Donor contacts MIT and is provided with information on the opportunity to make a tax-efficient gift to MIT through the TGE network and the *MIT Foundation (UK)*.
2. If interested in pursuing this method of making a gift, Donor is provided with a contact at the local TGE partner in their country of residence (the "Local TGE Partner") for instructions on how to make the gift.
3. The Local TGE Partner contacts the UK TGE partner, *Charities Aid Foundation ("CAF")*, for confirmation on the grant eligibility of *MIT Foundation (UK)*.
4. Once the Local TGE Partner receives confirmation from *CAF* on the eligibility of the *MIT Foundation (UK)* to receive grants, it contacts the Donor with instructions on how to make a gift to the Local TGE Partner.
5. The Local TGE Partner issues a receipt to the Donor for the full amount of the gift.
6. The Local TGE Partner then makes a grant of the Donor's gift, less 5%, directly to the *MIT Foundation (UK)*:
 - 2% is retained by the Local TGE Partner
 - 2% is transferred to the TGE member in the recipient country (in the case of the *MIT Foundation (UK)*, this will always be a transfer to *CAF*)
 - 1% is transferred to the TGE
7. Upon receipt of the grant from the Local TGE Partner, the trustees of *MIT Foundation (UK)* make distribution of the gift to the Institute.

European Foundations (TGE Partners)

Please note that final approval of the *MIT Foundation (UK)* as a recipient charity is pending at a number of the TGE Partners listed below. Some TGE Partners have specific restrictions for eligibility. For further information, donors should contact the relevant TGE Partner.

Austria – Stiftung Philanthropie Österreich

Burgring 16, 8010 Graz, Austria
Tel: +43-(0)1-275 52 98-0
Email: office@stiftung-oesterreich.at
Website: www.stiftung-oesterreich.at

Belgium – King Baudouin Foundation

Rue Brederodestraat 21, 1000 Brussels, Belgium
Tel: +32 2 549 02 31
Email: tge@kbs-frb.be
Website: www.kbs-frb.be

Bulgaria – Bulgarian Charities Aid Foundation (BCAF)

65 Vitosha Blvd, 2nd floor, Sofia 1000, Bulgaria
Tel: +359 2 981 19 01
Email: tge@bcause.bg
Website: www.bcaf.bg

Croatia – European Foundation for Philanthropy and Society Development

Heinzelova 62A 10000 Zagreb, Hrvatska, Croatia
Tel: +385 1 6458 949
Email: tge@europskazaklada-filantropija.hr
Website: europskazaklada-filantropija.hr

France – Fondation de France

40 Avenue Hoche, 75008 Paris, France
Tel: +33 1 44 21 87 60
Email: tge@fdf.org
Website: www.fdf.org

Starting in August 2012, French tax authorities prohibit French donors from making tax-effective donations to any organization that re-grants the funds outside of Europe. This ruling may change, but it is active for now.

Germany – Maecenata Stiftung

Rungestraße 17, 10179 Berlin, Germany
Tel: +49 30 2838 7909
Email: tge@maecenata.eu
Website: www.maecenata.eu

Great Britain – Charities Aid Foundation (CAF)

Kings Hill, West Malling, Kent ME19 4TA, United Kingdom
Tel: +44 3000 123 380
Email: tge@cafonline.org
Website: www.cafonline.org

Hungary – Carpathian Foundation Hungary

HU-3300 Eger Felvégi Str 53, Hungary

Tel: +36 36 516 750

Email: TGE@cfoundation.org

Website: www.carpathianfoundation.org

Ireland – The Community Foundation for Ireland

32 Lower O'Connell Street, Dublin 1, Ireland

Tel: +353 187 473 54

Email: tge@foundation.ie

Website: www.foundation.ie

Italy – Fondazione Lang Europe Onlus

Fondazione Lang Italia

Piazza Sant'Ambrogio, 2, 20123 Milano

Tel: +39 02 36635131

Email: tge@fondazioneurope.it

Website: fondazioneurope.it

Tax-effective donations in Italy are restricted to financial aid. However, there are no restrictions on the student beneficiaries' nationality.

Luxembourg – Fondation de Luxembourg

12 Rue Erasme BP 281, 2012 Luxembourg, Luxembourg

Tel: +352 274 748 1

Email: tge@fdlux.lu

Website: www.fdlux.lu

Luxembourg implemented the ECJ (European Court of Justice) ruling on cross-border giving within the European Union. Donors in Luxembourg are free to donate tax effectively within the EU without the restrictions in place for other TGE donors.

Poland – Foundation for Poland

ul. Kłopotowskiego 6/61 03-717 Warsaw, Poland

Tel: +48 22 54 25 880

Email: tge@fdp.org.pl

Website: www.fdp.org.pl

Tax-effective donations in Poland are restricted to scholarships and support services from which Polish students benefit.

Portugal – Fundacao Oriente

R. do Salitre, 66-68 1269-065 Lisboa, Portugal

Tel: +351 21 358 52 00

Email: administracao@foriente.pt

Website: www.foriente.pt

Romania – Odorheiu Secuiesc Community Foundation

Kossuth Lajos 20 535600 Odorheiu Secuiesc, Harghita, Romania

Tel: +40 741 655 773

Email: szka@szka.org

Website: www.szka.org

Slovakia – Carpathian Foundation Slovakia

Letna 27 040 01 Kosice, Slovakia

Tel: +421 55 6221152

Email: info@karpatskanadacia.sk

Website: www.karpatskanadacia.sk

Slovenia – SKUP Skupnost Privatnih Zavodov

Britof 469 4000 Kranj, Slovenia

Tel: +386 4 23 448 04

Email: info@skup.si

Website: www.skup.si

Spain – Two Options:**Fundación Carlos de Amberes (Heritage, Culture, Arts and Education)**

Claudio Coello, 99 28006 Madrid, Spain

Tel: +34 91 43 52 201

Email: tge1@fcamberes.org

Website: <http://www.fcamberes.org>

Fundación Empresa y Sociedad (Social Integration, Employment, Entrepreneurship, Education, Health and Environment)

Padre Damián 2, 28036 Madrid, Spain

Tel: + 34 91 564 78 93

Email: fabad@empresaysociedad.org

Website: <http://www.empresaysociedad.org>

Switzerland – Swiss Philanthropy Foundation

Rue De-Grenus 3 – Case postale 2097 1211 Genève 1, Switzerland

Tel: +41 22 732 55 54

Email: tge@swissphilanthropy.ch

Website: www.swissphilanthropy.ch

Other Resources

Additional information about European cross-border giving can be obtained from

TGE: www.transnationalgiving.eu

MIT International Giving: giving.mit.edu/international-gifts